

# G409-200 Chiller Gummi Bear Cubs



Issue Date:	6/28/2024	Revision:	A	Manufacturer Item #	50207
-------------	-----------	-----------	---	---------------------	-------

## PRODUCT DESCRIPTION

Chiller Gummi Bear Cubs 4ct 5lb

## PHYSICAL ATTRIBUTES

Appearance:	Bear cub shaped gummies in assorted colors						
Color:	Orange, Yellow, Blue, Red, Pink, and Green						
Flavor:	Peach, Mango, Raspberry, Cherry Strawberry, and Pineapple						
Pack Size:	4 x 5 Lbs.						
Case Dimensions:							
L[depth]xWxH in.	17.125	11.375	5.625	Case Cube(ft <sup>3</sup> ):	0.6341	Pallet Conf. (TI / HI)	9 10

## INGREDIENTS

Sugar, Corn Syrup, Water, Vegetable Oil (Coconut, Canola) And Carnauba Leaf Wax (To Prevent Sticking), Gelatin, Sorbitol, Citric Acid, Natural and Artificial Flavor, Pectin, Titanium Dioxide (Color), FD&C Yellow #5, FD&C Red #40, FD&C Blue #1, FD&C Yellow #6.

**ALLERGENS:** NONE.

## NUTRITIONAL INFORMATION

NUTRIENT	Per 29g
CALORIES	345
TOTAL FAT (g)	7
SATURATED FAT (g)	7
TRANS FAT (g)	0
CHOLESTEROL (mg)	0
SODIUM (mg)	52
TOTAL CARBOHYDRATE (g)	66
DIETARY FIBER (g)	0
TOTAL SUGARS (g)	45
ADDED SUGARS (g)	45
PROTEIN (g)	3
VITAMIN D (mcg)	0
CALCIUM (mg)	0
IRON (mg)	0
POTASSIUM (mg)	0



<b>Brand Name:</b>	Albanese	<b>Net Weight: (Lbs.)</b>	20.00
<b>Country of Origin</b>	USA	<b>Net Weight: (Kg.)</b>	9.07
<b>Case GTIN</b>	10634418512076	<b>Gross Weight: (Lbs.)</b>	20.15
<b>Kosher</b>	Not Kosher	<b>Gross Weight: (Kg.)</b>	9.14

Ready-To-Eat (RTE) Status:	
X	RTE
	Not-RTE

## MICROBIOLOGICAL ATTRIBUTES\*

Attributes	Limits
Total Aerobic Plate Count (cfu/g)	<500
Coliforms (cfu/g)	<10
Yeast and Mold (cfu/g)	<10
E. coli (cfu/g)	<10
Salmonella (per 25g)	Negative
S. aureus (cfu/g)	<10

## GENETIC ENGINEERING STATEMENT

	Completely Produced with Genetic Engineering.
	Partially Produced with Genetic Engineering.
	May be produced with Genetic Engineering.
X	<b>NOT</b> Produced with Genetic Engineering.

\*The above attributes are provided by the product manufacturer. Parameters are guaranteed attributes. It is not indicative of product testing.

**STORAGE CONDITIONS**

Recommended Condition: Best stored at 85°F.

**SHIPPING CONDITIONS**

Recommended Condition: Best shipped at 85°F.

**SHELF LIFE**

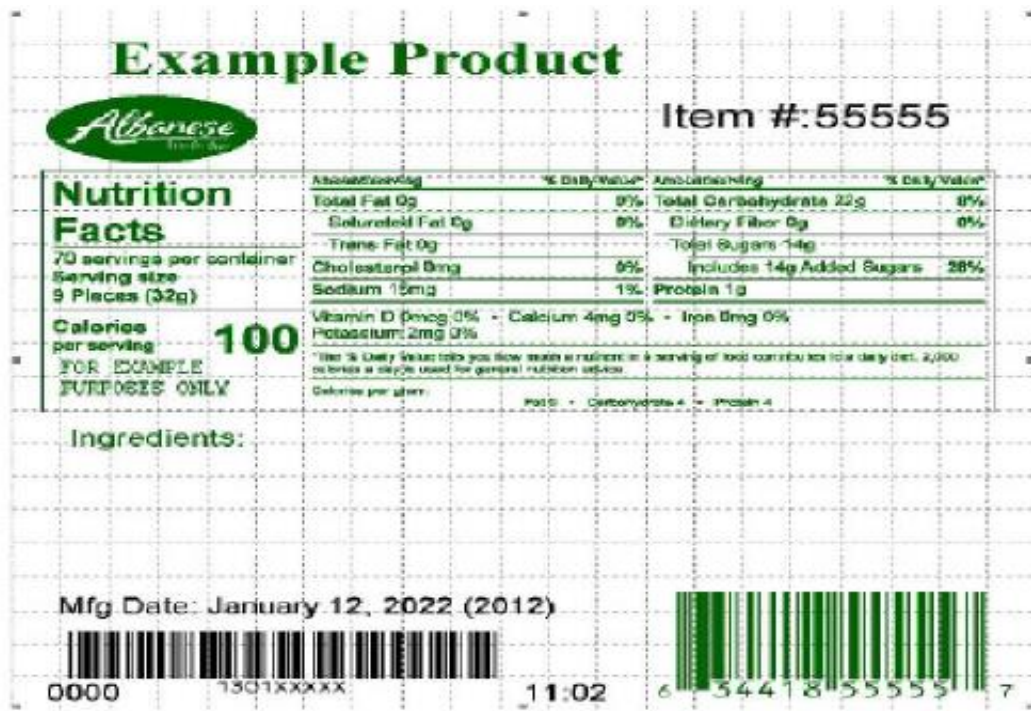
Recommended Shelf Life: 540 days at recommended storage conditions.

**ALLERGEN / SENSATIZER TABLE**

COMPONENT	PRESENT IN PRODUCT	PRESENT IN PRODUCTS MANUFACTURED ON THE SAME LINE	PRESENT IN THE SAME MANUFACTURING PLANT
PEANUTS AND DERIVATIVES	NO	NO	YES
TREE NUTS AND DERIVATIVES	NO	NO	YES
EGG AND DERIVATIVES	NO	NO	YES
MILK AND DERIVATIVES	NO	NO	YES
SOY AND DERIVATIVES	NO	NO	YES
WHEAT	NO	NO	YES
FISH	NO	NO	NO
CRUSTACEAN SHELLFISH	NO	NO	NO
SULFITES > 10 ppm	NO	NO	NO
MUSTARD	NO	NO	NO
SESAME	NO	NO	YES
GLUTEN	NO		
FD&C ARTIFICIAL COLOR	FD&C Yellow #5, FD&C Red #40, FD&C Blue #1, FD&C Yellow #6.		

**CODE FORMAT**

Manufactured:



**LABEL / CASE GRAPHICS**

